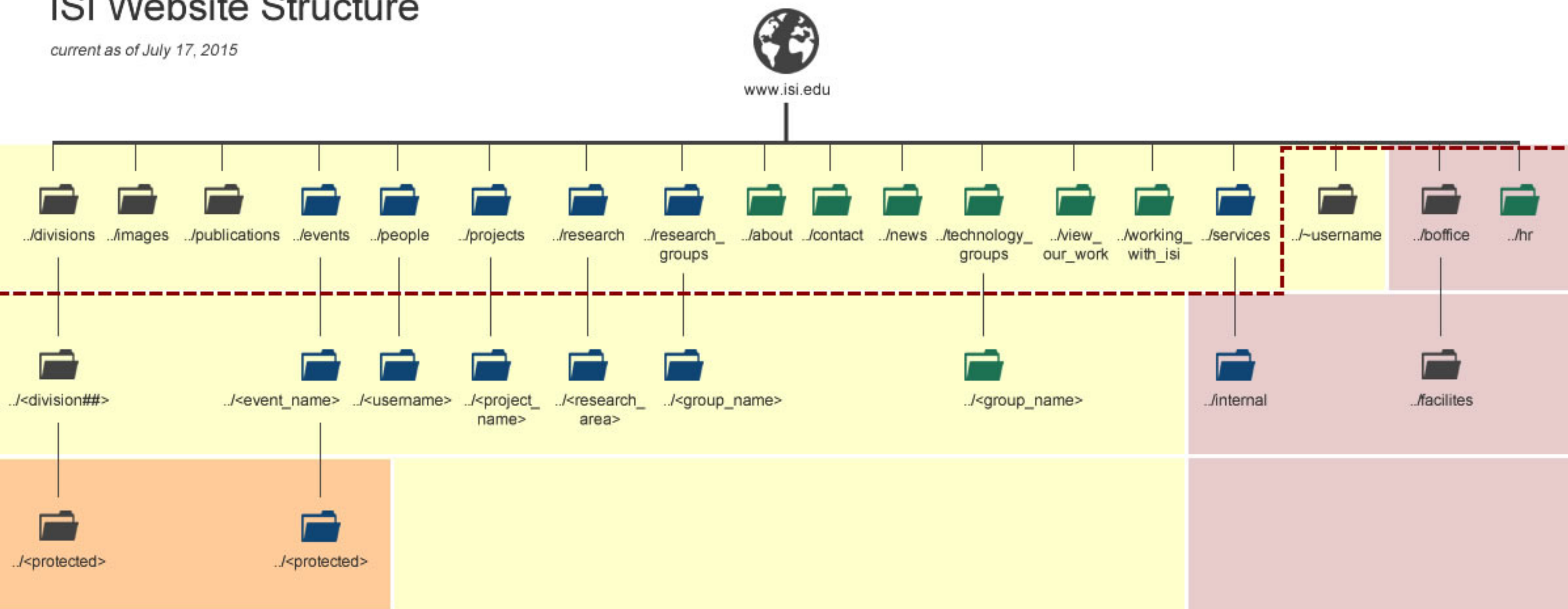




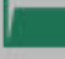



# ISI Website Structure

current as of July 17, 2015



## Key

-  Public area
-  ISI internal area
-  Owner protected area
-  Hosted in files (ISI shared NFS filesystem)  
`/nfs/web/htdocs/...`
-  Hosted in Drupal (ISI Website Manager)  
`https://drop.isi.edu`  
Visit <http://action.isi.edu/drupal> for more information.
-  May be hosted in files (ISI shared NFS filesystem) or in Drupal (ISI Website Manager)

IPC managed Owner managed

### Note: shared namespace:

Certain portions of the `www.isi.edu` namespace may be hosted in either Drupal or the ISI shared NFS filesystem thanks to reverse proxying. This feature allows owners the option to choose whether a website is created using Drupal or with some other tool, without revealing this information to website visitors. Portions of the namespace to which this applies are shown in **blue** in the figure above.

This feature works as follows:

- 1) If you wish to use Drupal to host a website within the shared space, for example `www.isi.edu/people/john_smith`, the site should be created in Drupal, and will be accessible to the public as soon as it is created.
- 2) If you instead wish to host such a website within ISI's NFS filesystem, site files should first be added to the appropriately named directory within the filesystem. Once this is complete, you must contact **Action** to override Drupal's precedence for that path. The figure above shows the correspondence between locations in the NFS filesystem and URLs within the `www.isi.edu` namespace.

Please note this scenario only holds true for directories shared by Drupal and the ISI shared NFS filesystem, and shown in **blue** in the figure.